

Building Blocks

to transform the Built Environment



£1.3 billion

NHS savings by retrofitting cold homes



£82 billion

boost to UK Gross Value Added by circular economy transition



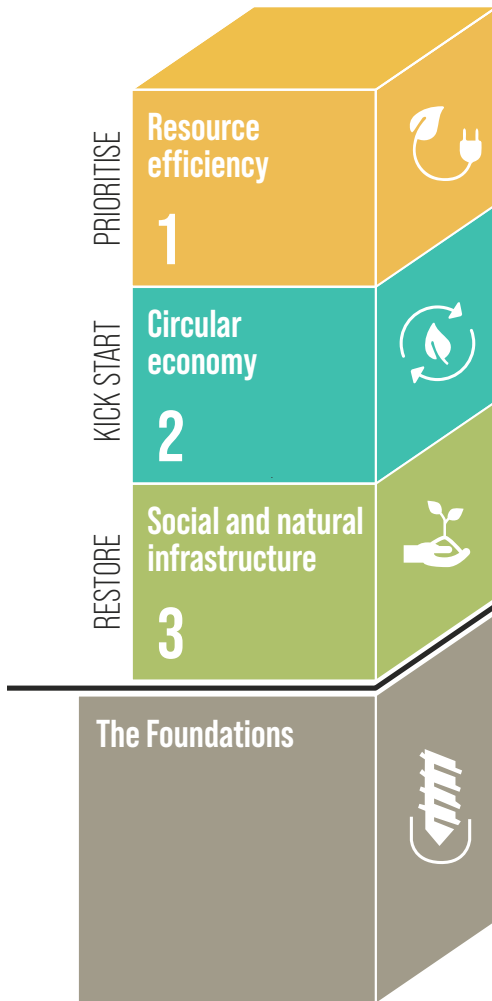
Up to 725,000 jobs

created through low-carbon sector

A manifesto to transform the built environment through unlocking the climate opportunities provided by circular and regenerative policies.

The UK built environment is linked to **42%** of emissions, **62%** of waste and **50%** of material use.

Early adoption policies for the next government



1 Make the Future Homes/ Building Standard fit for purpose:

- Align with the industry backed metrics and reporting processes of the Net Zero Carbon Buildings Standard.
- Legislate the reporting and limiting of embodied carbon. Refer to cross-industry Policy Position Paper.

2 Incentivise retrofit and circularity:

- Align financial incentives to prioritise retrofit.
- Establish material banks and material passporting nationally.

3 Ensure a just and green transition:

- Create a nationwide green jobs strategy to utilise the construction sector's national reach in green job creation.

The Foundations needed to support the building blocks to succeed long-term:

- **Provide climate literacy** at a national scale.
- **Align the economy** with well-being and planetary limits.
- **Safeguard future generations'** ability to act.
- **Foster climate leadership** through reforms and working with local authorities.



Scan here

These policies form part of the **Building Blocks manifesto** for the next Government.

We encourage parliamentarians to pledge their support for these critical policies ahead of the general election.

Endorsements for early adoption policies



UK Architects Declare
**Climate & Biodiversity
Emergency**

w: architectsdeclare.com e: hello@architectsdeclare.com

> 1,330

UK Practices (AD)

> 8,080

Global Practices (BED)

28

Countries (BED)

Document prepared by UK Architects Declare (AD), a not-for-profit organisation under the umbrella of Built Environment Declares (BED)